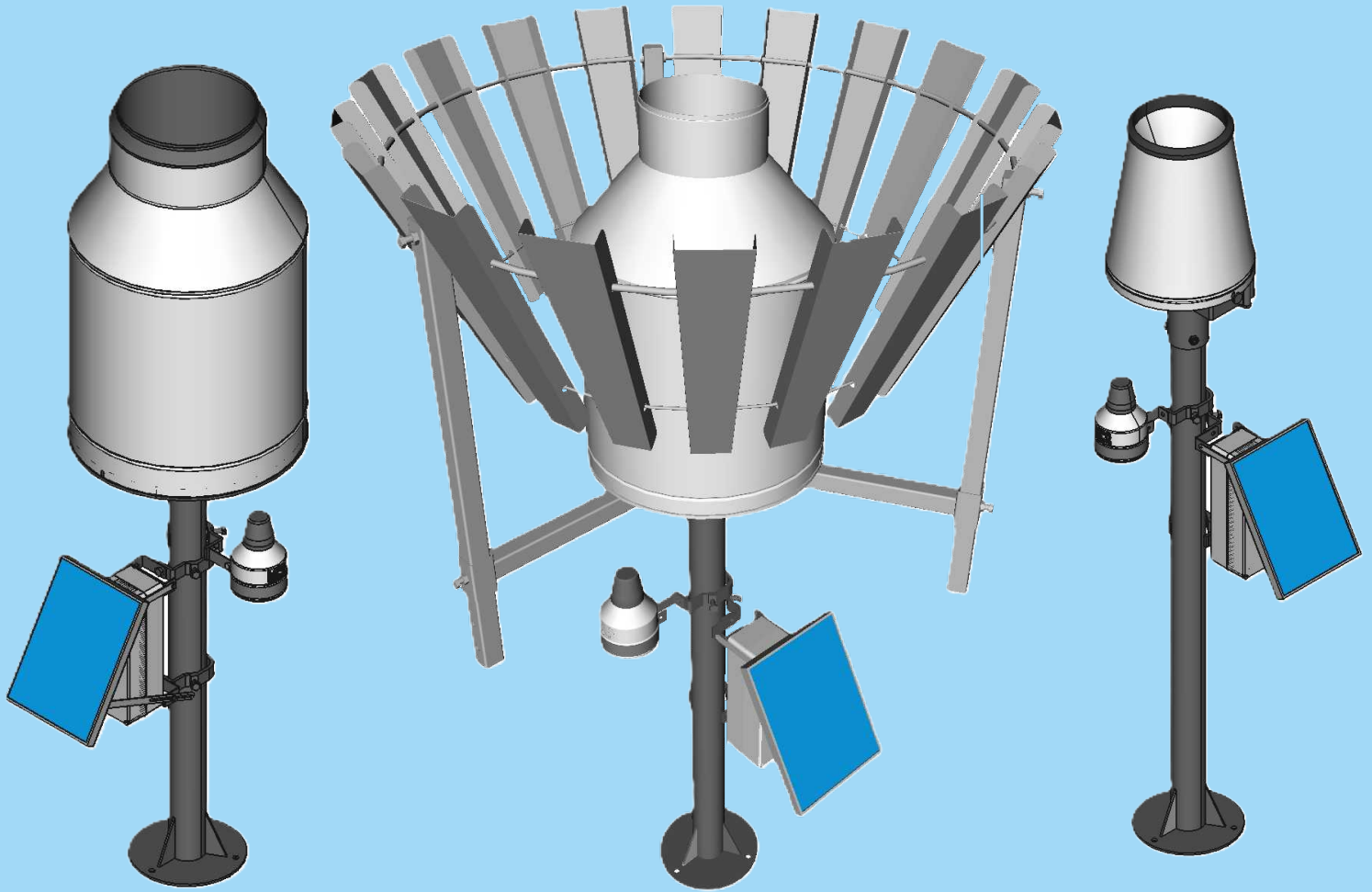


APS *Automatic precipitation station*

system **APS**
Since 1992



Automatic Rain Gauge Station is a cutting-edge solution for precise, reliable precipitation measurement in any environment. Equipped with a datalogger and solar-powered backup battery charging, this station ensures continuous data collection and transmission, even in remote or off-grid locations.

Application:

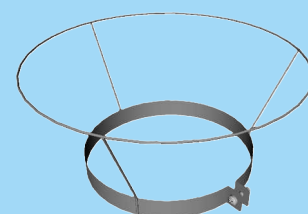
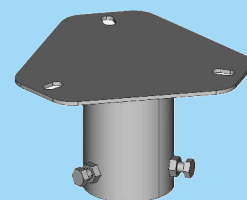
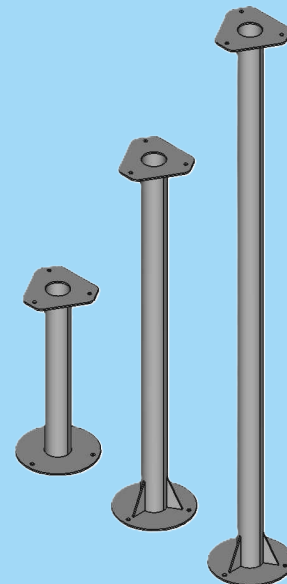
- Hydrology
- Meteorology
- Environmental monitoring systems
- Climate research projects
- Agriculture

Key features:

- High-Precision Rain Gauge: Designed for accuracy, the station captures all types of precipitation, providing valuable data for meteorology, agriculture, and hydrology
- Datalogger: Real-time data logging and transmission over the mobile network enable seamless data access from any location, ensuring timely updates and remote monitoring
- Solar-Powered Backup: A built-in solar panel charges the backup battery, providing reliable operation during power outages or in locations without mains electricity
- Low Maintenance: Station requires minimal upkeep, making it ideal for continuous long-term deployment

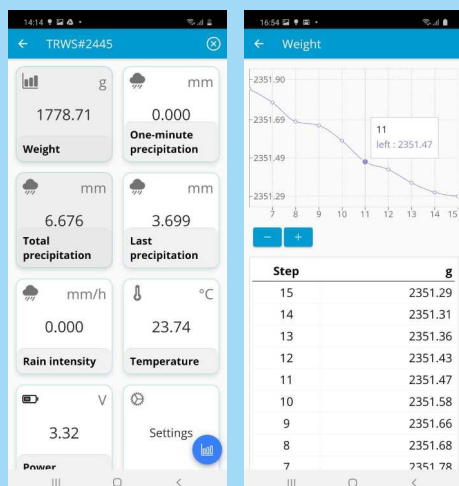
Automatic Stations Series

TECHNICAL SPECIFICATION	APS with TRWS_10/30/TRWS_E
Orifice size	200/314/400 cm ²
Range of precipitation	500 mm / 1500 mm / unlimited
Maximum rain intensity	120 mm / min.
Rain duration	sec.
Accuracy of intensity	0.025 mm / min.
Absolute accuracy	± 0.1 %
Resolution	0.001 mm
Measuring element	Aluminium alloy / Stainless steel load cell
Operating temperature	-30 ÷ 70 °C
Operating humidity	0 ÷ 100 %
Protection rating	IP 65
Dimensions	Ø 255 ÷ 1100 mm × 1-2 m*
Weight	12 ÷ 30 kg* *Depends on the configuration
Power supply	8-28 VDC / 7 mA average
Heating supply (Mode OFF/ON/Threshold)	12 W / 12 V, 48 W / 24 V
Output contact (1 / 0.1 / 0.01mm)	U _{max} . 30 V, I _{max} . 300 mA
Wired communication	SDI-12 / ModBus (RS-485)
Wireless communication	Bluetooth LE



OPTIONAL	
Ambient air temperature	PT 1000
Wind Shield	Tretyakov / Alter
Stand 1/1.5/2 m, Mounting adapter, Bird protector	

MPS AiO BLUETOOTH APPLICATION



Scan for nearby compatible sensors. Display current measurements. Display short-term measurement history in grafical and tabular form. Change sensor settings. Upload firmware.



Web application for Windows:
<https://app.mps-system.sk/main>

