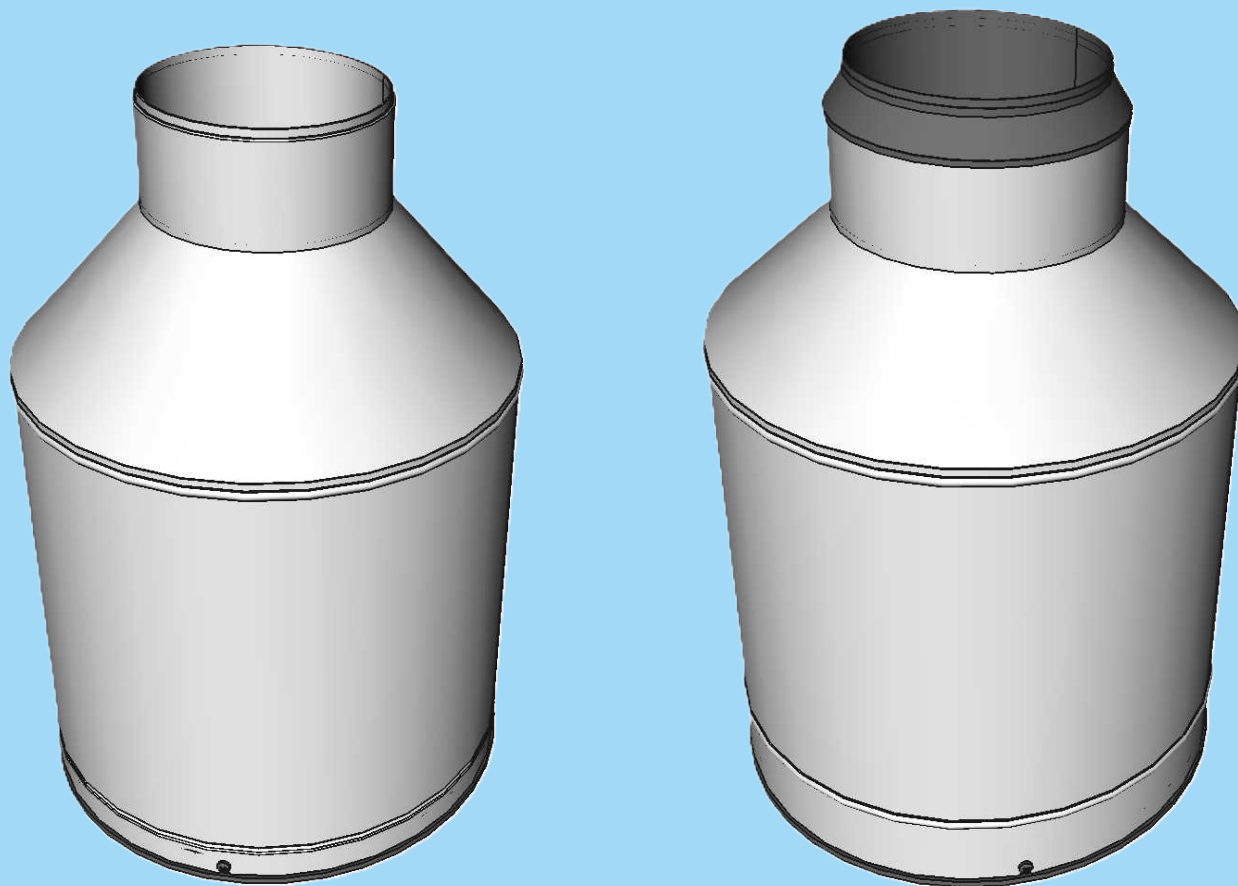


TRWS_10

Rain gauge, bucket 10 L

MPS
system
Since 1992



Featuring an innovative mechanical and electronic design, the TRWS is an exceptional Instrument for measuring all types of precipitation across a wide temperature range, even under extreme wind and snow conditions. Known for its exceptional sensitivity and precision, the TRWS rain gauge combines robust mechanical construction with sophisticated firmware to ensure optimal accuracy and reliability. It is available with orifice size of 200 cm².

Application:

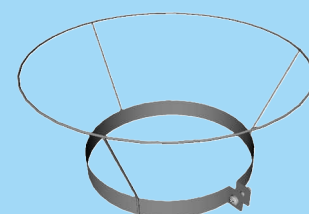
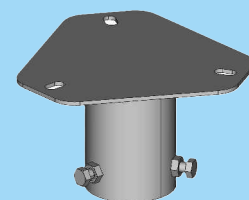
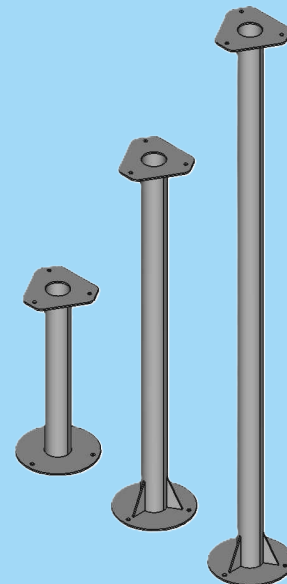
- Meteorology
- Climatology
- Hydrology
- Urban infrastructure
- Aviation
- Agriculture

Key features:

- Measurement of solid and liquid precipitation, one-minute rain intensity, total sum of precipitation, rain duration
- Elimination of wind vibration, particles, unreal step change of weight, evaporation, temperature fluctuation
- Output signals: contact, RS-485, SDI-12, ModBus
- Ultra low power consumption
- Evaluation and accuracy check in situ
- Local and remote diagnostics
- Autodiagnostic and self check

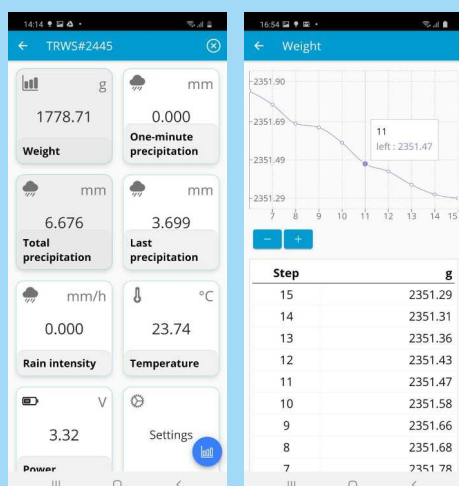
Total Rain Weighing Sensor Series

TECHNICAL SPECIFICATION	TRWS_10 / TRWS_10SS
Orifice size	200 cm ²
Range of precipitation	500 mm
Maximum rain intensity	120 mm / min.
Rain duration	sec.
Accuracy of intensity	0.025 mm / min.
Absolute accuracy	± 0.1 %
Resolution	0.001 mm
Measuring element	Aluminium alloy / Stainless steel load cell
Operating temperature	-40 ÷ 70 °C
Operating humidity	0 ÷ 100 %
Protection rating	IP 65
Dimensions	Ø 355 × 535 mm / Ø 351 × 530 mm
Weight	8.5 kg
Power supply	8-28 VDC / 7 mA average
Heating supply (Mode OFF/ON/Threshold)	12 W / 12 V, 48 W / 24 V
Output contact (1 / 0.1 / 0.01mm)	U _{max.} 30 V, I _{max.} 300 mA
Wired communication	SDI-12 / ModBus (RS-485)
Wireless communication	Bluetooth LE



OPTIONAL	
Ambient air temperature	PT 1000
Wind Shield	Tretyakov / Alter
Stand 1/1.5/2 m, Mounting adapter, Bird protector	

MPS AiO BLUETOOTH APPLICATION



Scan for nearby compatible sensors. Display current measurements. Display short-term measurement history in graphical and tabular form. Change sensor settings. Upload firmware.



Web application for Windows:
<https://app.mps-system.sk/main>

