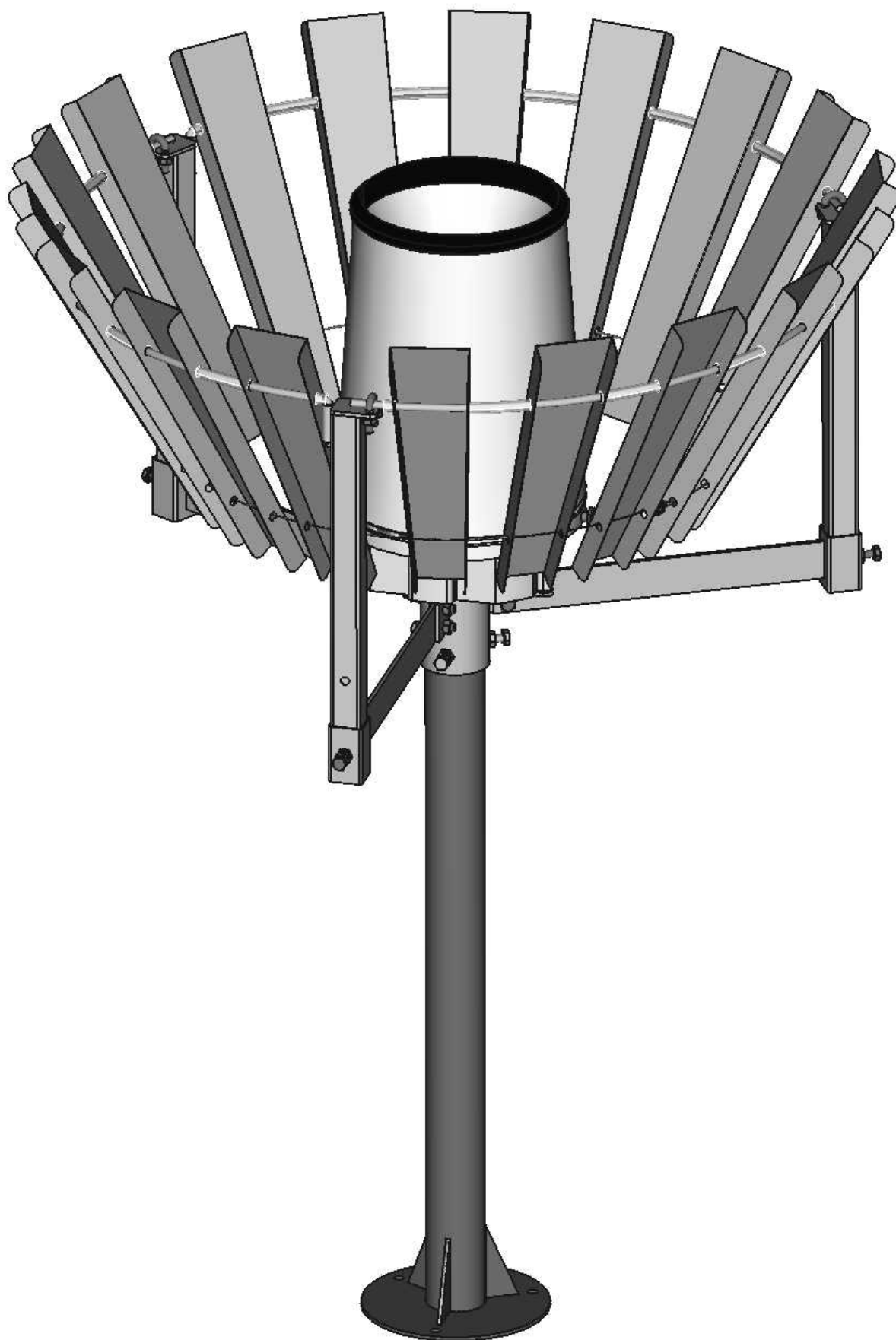
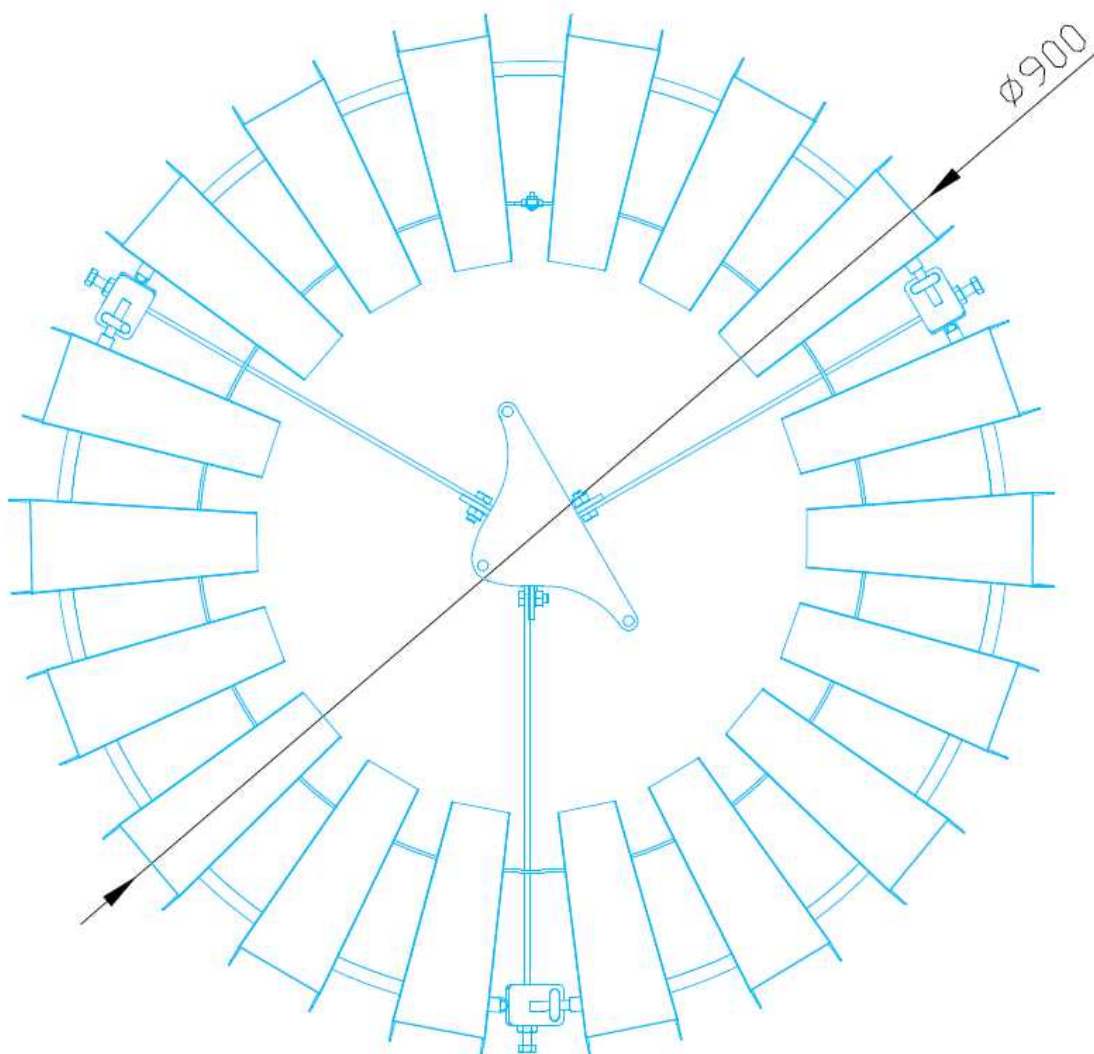
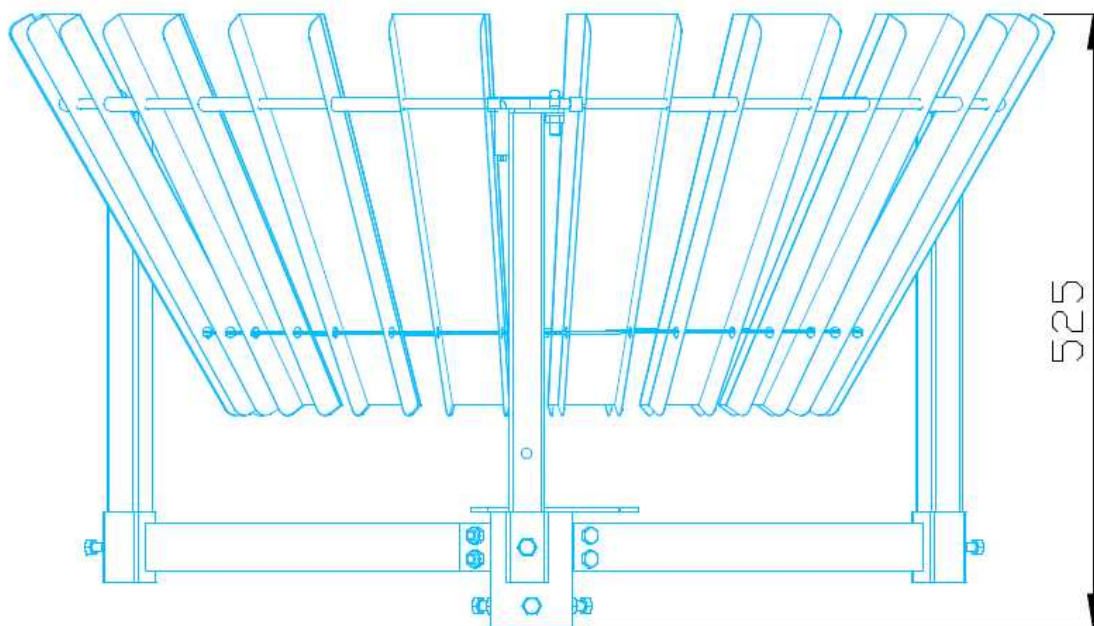


## Instalation guide Tretyakov Wind Shield TRWS\_E



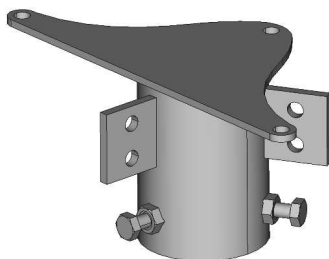
v.2.0  
02.2025

**Dimensions:**

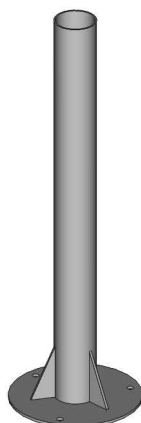


## **Parts list:**

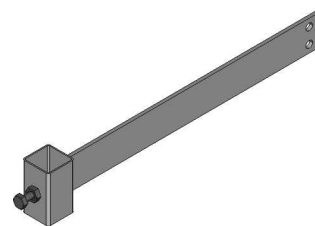
**1. Mounting bracket 1 pc**



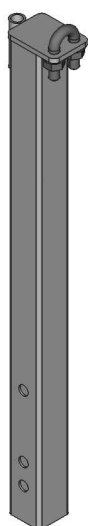
**2. TRWS\_E stand 1 pc**  
(not part of the TWS delivery)



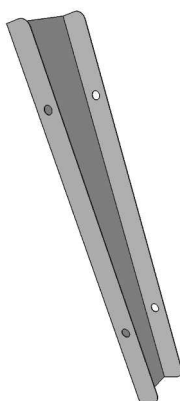
**3. Horizontal arm 3 pcs**



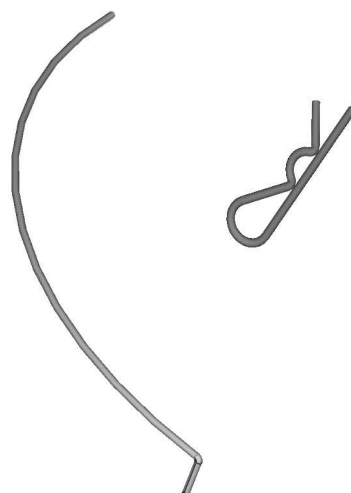
**4. Vertical support 3 pcs**



**5. Leaf 18 pcs**



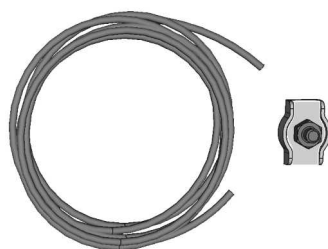
**6. Ring segment 3 pcs**  
R-Clip 3 pcs



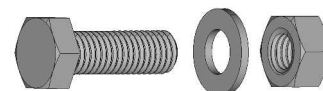
**7. Spacers**  
– Long 15 pcs  
– Short 6 pcs



**8. Steel cable & clamp 1 pc**



**9. M8x20 bolt with  
nut & washer 6 pcs**

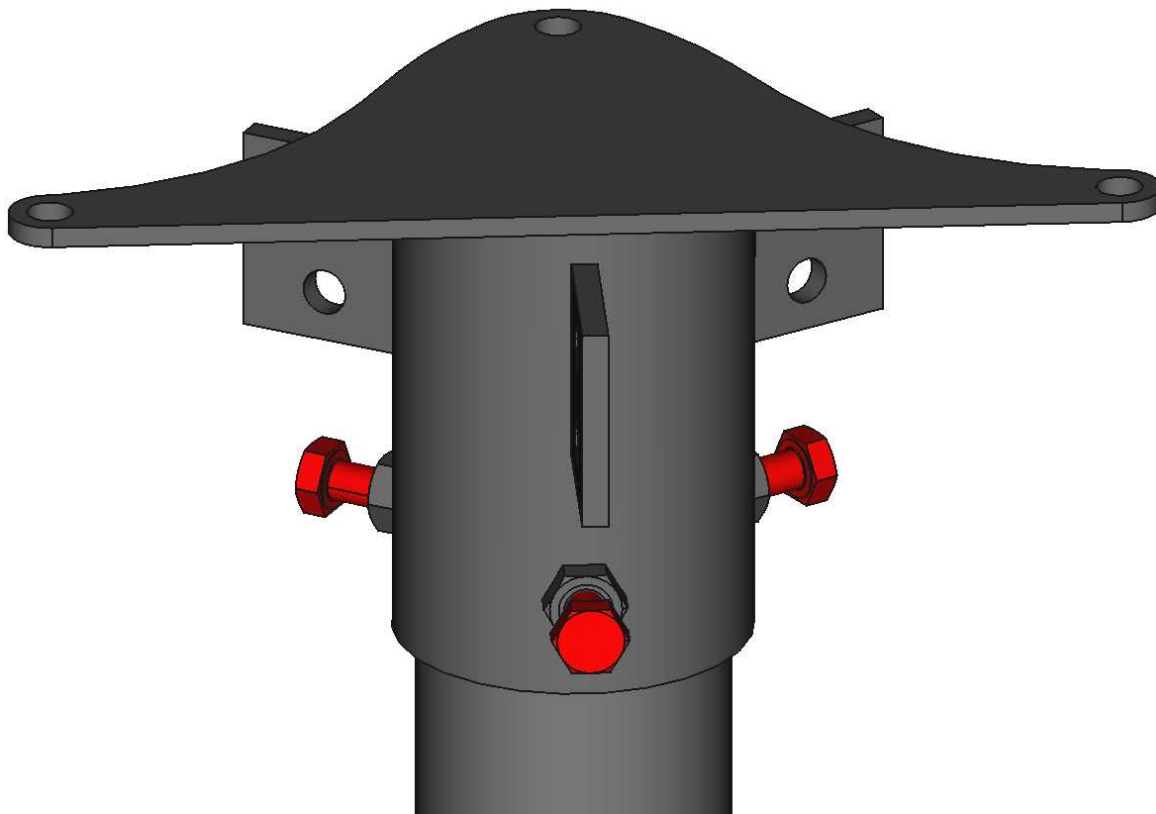


## Assembly procedure:

Follow these step-by-step instructions to assemble the TWS for your precipitation measurement system.

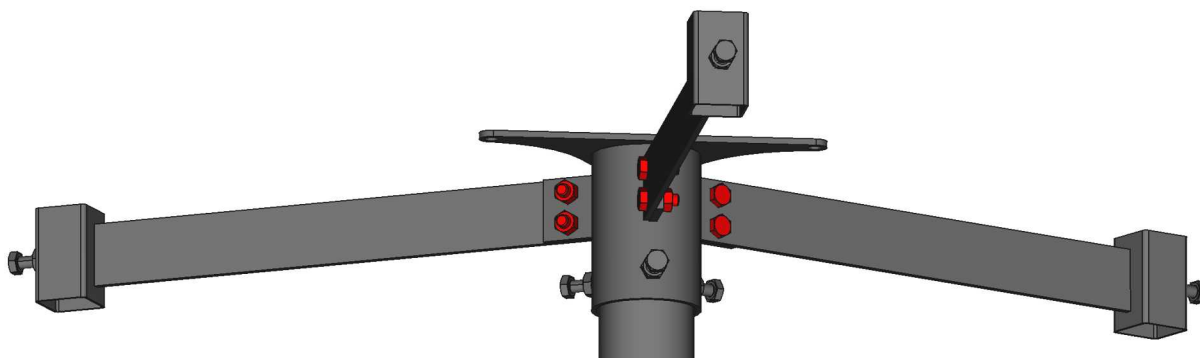
### 1. Fix the Mounting Bracket to the Stand

- Place the **Mounting Bracket** (1) to the **TRWS Stand** (2).
- Secure the Mounting Bracket using **three M8 bolts**. Tighten with a 13 mm wrench.



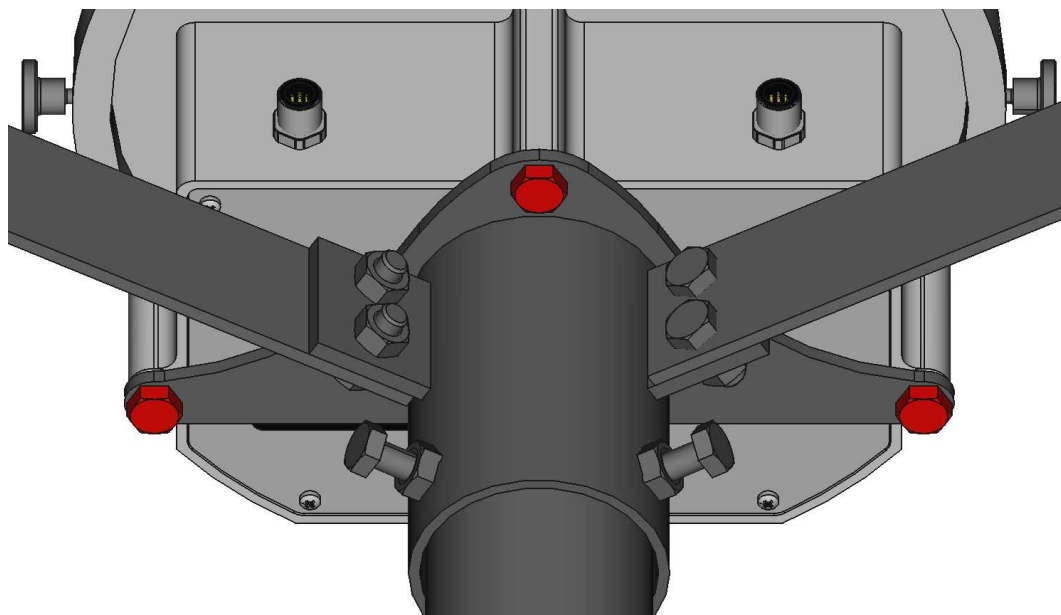
### 2. Attach Horizontal Arms

- Attach **3 pcs Horizontal Arms** (3) to the **Mounting Bracket** (1) using **6 pcs M8x20 bolts with washer & nut** (9) for each arm. Tighten with a 13 mm wrench.



### 3. Attach TRWS\_E base

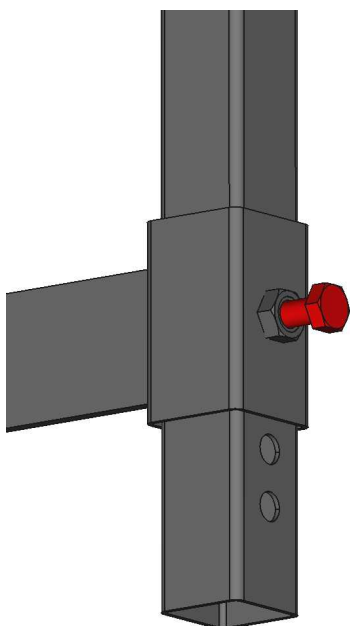
- Position the TRWS\_E base on top, ensuring its threaded holes align with the holes in the flange and the Mounting Bracket.
- Secure the base plate using **three M8 bolts with washer** . Tighten with a 13 mm wrench.



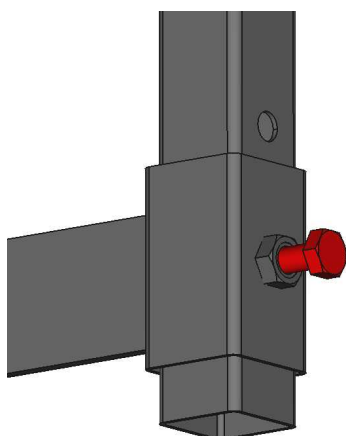
### 4. Attach Vertical Supports

- Attach **3 Vertical Supports** (4) to the ends of the Horizontal Arms (3).
- Use the holes that correspond to your specific TRWS model:

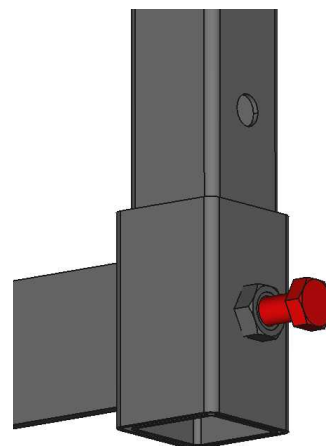
TRWS\_E.200



TRWS\_E.314



TRWS\_E.400



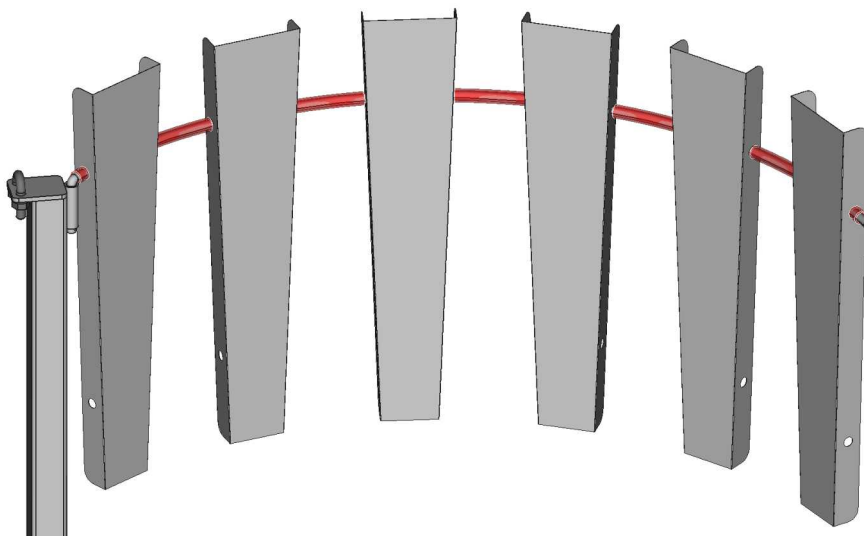
- Tighten with a 13 mm wrench.

## 5. Assemble the Ring Segments with Leaves and Spacers

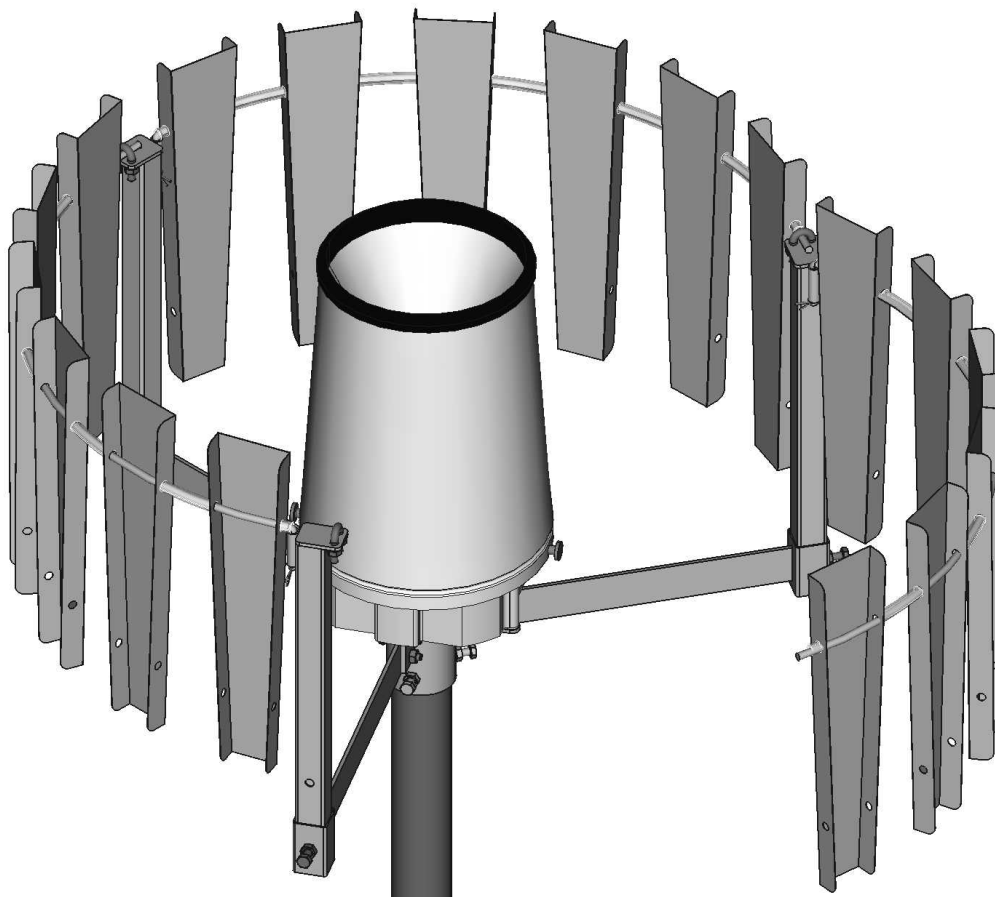
- Insert the **Ring segments** (6) into the hinges on the **Vertical support** (4)
- On each **Ring Segment**, alternately attach **Leaves** (5) and **Spacers** (7). Use the holes at the wider ends of the Leaves for attachment. Between **six leaves**, use **5 pcs of Long spacers** (7), and on both ends use **2 pcs Short spacers** (7) each.

**Warning: Leaves edges are very sharp – always use gloves when handling!**

- Ensure the flat sides of the Leaves face inward, towards the rain gauge.

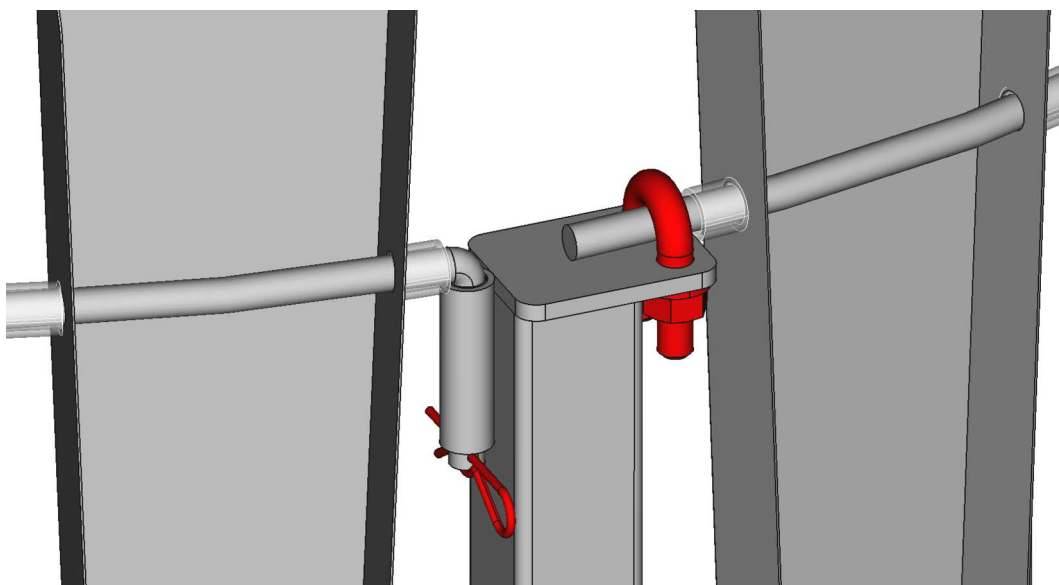


## 6. Securing ring segments



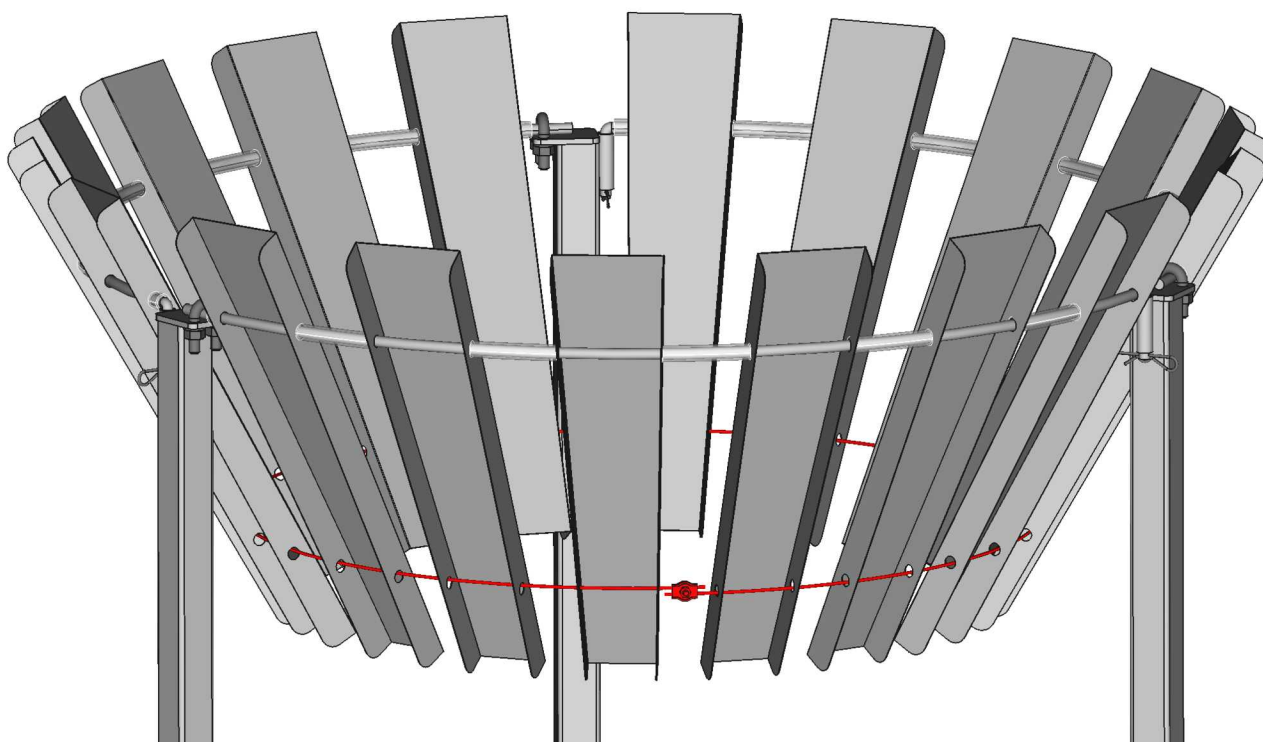


- By rotating the **Ring segment** at the hinge, insert the open end into the **U-clamp** on the other leg
- Tighten with a 13 mm wrench
- Secure with **R-clip** (6)

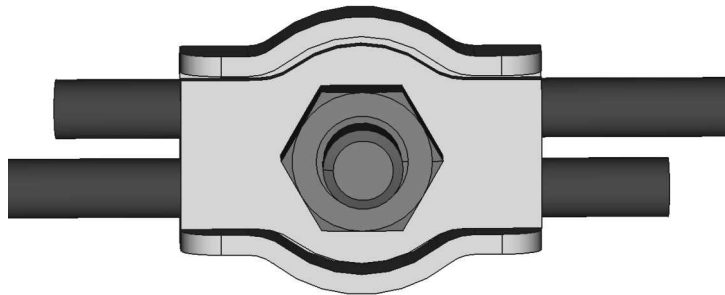


## 7. Install the Steel Cable

- Thread the **Steel Cable** (8) through the holes at the lower ends of each Leaf (5).



- Connect both ends of the cable using the provided clamp. Tighten with a 7 mm socket wrench.



### **Final Adjustments:**

- Verify that all bolts are tightened and the structure is stable.
- Ensure the Leaves are evenly spaced and properly aligned for optimal wind shielding.
- **Make sure the stand is securely fastened and anchored to the ground to prevent the entire assembly from vibrating in the wind.**